



# Full Service MEP+™ Contractor



Offering a Strong Diversity  
of MEP+™ Services

## Construction Services

Heavy Industrial  
Industrial Refrigeration  
Food Process Piping  
HVAC  
Plumbing  
Prefabrication  
Design & Engineering  
Fire Protection

## Client Services

HVAC/R Services  
Plumbing Services  
Service & Maintenance  
BAS/Systems Integration  
Electrical  
Central Plant Services  
Specialized Projects  
Fire Alarm  
Security

Serving Chicagoland Since 1963





## Quality, Integrity, Reliability Something You Can Always Count On With AMS

AMS Industries, Inc., has served the MEP+™ construction needs for over 60 years. Through our corporate commitment and dedication to the industry, AMS has established three distinct business units: Industrial Refrigeration & Food Processing, Commercial MEP+™ Construction including HVAC, Plumbing, Fire Protection, and Heavy Industrial Construction.

AMS Industries' strong leadership and reputation for meeting the challenges and demands of our customers through deliberate and definitive response to growth and change have helped us grow from a one-man proprietorship back in 1963 to a corporation of more than 500 employees today.

At AMS, we believe that quality leadership and the right people coupled with integrity and a passion for excellence create a company-wide philosophy for mutual success. We have set a high level of expectation for ourselves and for the integrity of those we serve, and we vow never to compromise those standards.







AMS Industrial Group provides a full array of mechanical construction and process piping solutions for the refining, steel, power, and industrial manufacturing industries. These services include industrial process and power piping, equipment setting, boilermaker services, heavy wall ductwork, instrumentation and plant maintenance.

Leveraging decades of experience, AMS has developed a stringent commitment to safety, cost management systems, dedicated project leadership and a strong quality control program to ensure the highest standards are upheld for the benefit and protection of our people, the worksite environment, and the industry.

#### **CAPABILITIES**

- Process & Power Piping
- Pipe & Skid Prefabrication
- Equipment Rigging & Setting
- Instrumentation
- Code & Special Alloy Welding
- Plant Service & Maintenance
- Emergency Shutdown & Turnaround Services

#### **INDUSTRIES SERVED**

- Power Generation
- Petrochemical/Refining
- Steel Manufacturing
- Industrial Manufacturing
- Wastewater Treatment
- Pharmaceuticals

#### **QUALITY ASSURANCE PROGRAMS**

ISO Based Quality Management System (Non-Accredited)  
Client/Project Specific Program Development

##### **ASME Accreditation**

"A" (Certificate No. 55,678)  
"PP" (Certificate No. 31,755)  
"U" (Certificate No. 32,843)

##### **NBIC Accreditation**

"R" (Certificate No. 5525)

Note: These stamps are held at the corporate level.

## **MEP+<sup>TM</sup> SOLUTIONS**

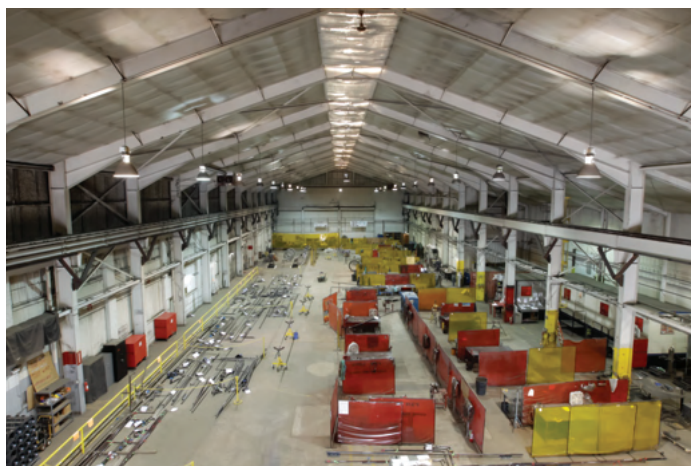
9341 Adam Don Parkway  
Woodridge, IL 60517  
Phone: 630.887.7700

2646 Highway Avenue, Unit 202  
Highland, IN 46322  
Phone: 219.392.3000

3314 Ambrose Avenue  
Nashville, TN 37207  
Phone: 629.895.2900

24 HOUR EMERGENCY 800-794-5033 • [www.amsindustries.com](http://www.amsindustries.com)





To meet the demands of the greater Northwest Indiana and Joliet industrial corridors, AMS has strategically located its industrial fabrication facility in East Chicago IN. This facility is comprised of 30,000 sqft of conditioned fabrication space with additional adjacent buildings to facilitate storage, lay down, prep and painting (special coatings) as required. This combined with the corporate facilities located in Woodridge, IL, which primarily serves our commercial piping, plumbing, and sheet metal fabrication, provides a total of 130,000 sqft of qualified fabrication space to better serve our clients and meet all of our corporate fabrication requirements. Each facility operates under the U.A. National Pipe Fabrication agreement and fully utilizes blended crews bringing significant cost and scheduling value to project delivery.

AMS maintains full-time in-house QA/QC management to provide complete document control for each project. This process includes welder testing and certification, material test reports, procurement documentation, and weld map traceability for real-time project documentation.



Standards and techniques include SMAW, GMAW, FCAW, GTAW and client specific requirements. Additional in-house services include engineering, piping design, scheduling, and isometric/spool drawing verification.

#### **Facility Highlights:**

- Two 30-Ton Overhead Cranes
- 12 Temperature Controlled Hydrostatic Testing Stations
- Weld Positioners up to 42"
- Welder Testing Stations
- Segregated & Secure Welding Rod Storage
- Segregated Area for Non-ferrous Fabrication
- Positive Material Identification
- Oxygen Piping Clean Room Capabilities
- Rail Spur Access

#### **QUALITY ASSURANCE PROGRAMS**

ISO Based Quality Management System (Non-Accredited)  
Client/Project Specific Program Development

#### **ASME Accreditation**

"A" (Certificate No. 55,678)

"PP" (Certificate No. 31,755)

"U" (Certificate No. 32,843)

#### **NBIC Accreditation**

"R" (Certificate No. 5525)

Note: These stamps are held at the corporate level.

## **MEP+<sup>TM</sup> SOLUTIONS**

9341 Adam Don Parkway  
Woodridge, IL 60517  
Phone: 630.887.7700

2646 Highway Avenue, Unit 202  
Highland, IN 46322  
Phone: 219.392.3000

3314 Ambrose Avenue  
Nashville, TN 37207  
Phone: 629.895.2900

24 HOUR EMERGENCY 800-794-5033 • [www.amsindustries.com](http://www.amsindustries.com)







AMS Industries, Inc. is uniquely positioned to leverage its investment in technology, fabrication capabilities, and human capital to meet the industry's aggressive project delivery systems.

Drawing from the depth of our organizational structure and over 60 years of industry experience, our group of professional engineers, experienced estimators, seasoned project managers coupled with our strong commitment to workflow processes and technology innovations can pull together every facet of the project to deliver an efficient and compromised mechanical system.

We take pride in our dedication to every project and we are privileged that our most valued asset, "our clients" continue to place their trust in AMS Industries, Inc.

### **CAPABILITIES**

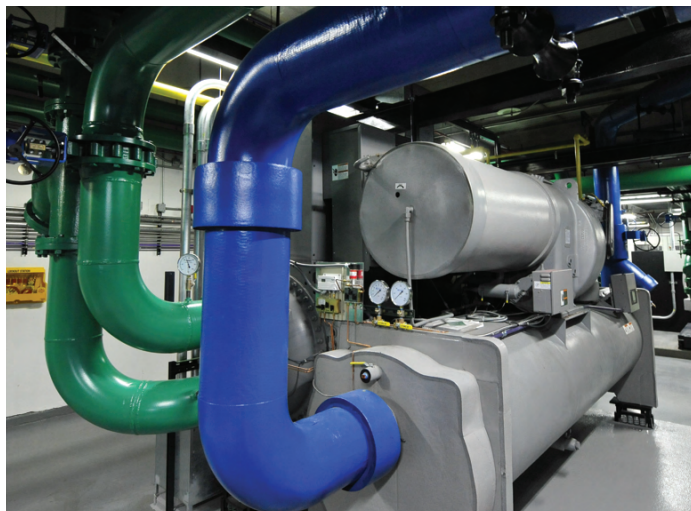
- Prefabrication & Modularization
- Multi-trade Collaboration
- Integrated Project Delivery
- Central Plant Design/Construction & Renovation
- BAS/Systems Integration
- Process Cooling
- Medical Gas Systems
- Service & Maintenance

### **VIRTUAL DESIGN & CONSTRUCTION**

- Engineering & Design
- BIM
- 3D Scanning
- Multi-Discipline Collaboration
- Integration/Fabrication
- MEP+™ Logistics
- Primavera Scheduling
- Advance Mobile Technology

### **INDUSTRIES SERVED**

- Hospitality
- Education/Institutional
- Mission Critical
- Multi-Discipline Collaboration
- High-Rise Office & Multi-Family
- Healthcare
- Industrial Manufacturing
- Pharmaceutical
- Industrial Refrigeration
- Stadiums



## **MEP+™ SOLUTIONS**

9341 Adam Don Parkway  
Woodridge, IL 60517  
Phone: 630.887.7700

2646 Highway Avenue, Unit 202  
Highland, IN 46322  
Phone: 219.392.3000

3314 Ambrose Avenue  
Nashville, TN 37207  
Phone: 629.895.2900

24 HOUR EMERGENCY 800-794-5033 • [www.amsindustries.com](http://www.amsindustries.com)



### AMS Provides 24/7 HVAC/Ammonia & Freon Refrigeration Repair/Preventive & Predictive Maintenance Services

AMS Industries, Inc. Service Group provides an unsurpassed dedication and commitment to our clients by providing a diversity of services with the technical discipline to support and maintain your facility.

Providing **Service** is more than just a word. It is a commitment to our clients and another example of **AMS Industries, Inc.** delivering a comprehensive business model. Our innovative approach to customizing **OUR** services to meet **YOUR** equipment needs allows us to match technical expertise to the complexity of equipment, location, and demand.

#### You Can Depend On AMS To Provide:

- **Customized Preventive/Predictive Maintenance Programs.** Delivered through our trademarked maintenance program **EquipCare™**. We believe that a maintenance program should not be forced into a standard template, but be built to fit **YOUR** equipment needs and budget.
- **Dedicated Primary and Secondary Service Technicians, Account Representation and a Full-Service Support Administrative Team (behind the scenes).** All of the elements needed to deliver a well-rounded service experience.
- **24/7/365** Service providing you with live dispatch service support during and after hours.

- **Drug Test, Background Check, and MVR Reports** are completed annually on each service employee.
- **Customer First Philosophy** and our goal to deliver **Service Excellence**,
- **Investment in continuing education to our employees**, is a commitment made by AMS and a requirement for our service team. From safety certifications to manufacturer specific training; it is our job to make sure we remain ahead of industry trends.
- **Providing service and support to all manufacturer equipment**

#### CAPABILITIES

- HVAC/Mechanical Systems Replacement, Repair & Maintenance
- Ammonia Refrigeration Repair & Maintenance
- Transcritical CO2
- Chiller Repair, Overhaul & Maintenance
- Boiler Repair & Maintenance
- HVAC/Mechanical System Condition Assessments

#### INDUSTRIES SERVED

- Hospitality
- Education/Institutional
- Mission Critical
- Food Processing
- High-Rise Office & Multi-Family
- Healthcare
- Industrial Manufacturing
- Pharmaceutical
- Industrial Refrigeration

**Energy Efficiency Measures Installer**  
ICC # 18-0265



## MEP+<sup>TM</sup> SOLUTIONS

9341 Adam Don Parkway  
Woodridge, IL 60517  
Phone: 630.887.7700

2646 Highway Avenue, Unit 202  
Highland, IN 46322  
Phone: 219.392.3000

3314 Ambrose Avenue  
Nashville, TN 37207  
Phone: 629.895.2900

24 HOUR EMERGENCY 800-794-5033 • [www.amsindustries.com](http://www.amsindustries.com)





**PLUMBING**


To complement our nucleus of mechanical services, AMS formed a Plumbing Group in 2013. This group is led by an experienced team of professionals with over 100 years of combined experience. By offering innovative design, system fabrication, project coordination, and field installation we are able to meet the challenges of today's plumbing industry.

Our field personnel consist of licensed journeyman plumbers who maintain technical training certifications to ensure AMS provides clean and safe drinking water for our clients and communities.

By Utilizing today's advanced technology to lower costs, eliminate installation conflicts and streamline project execution the Plumbing Group, along with our entire MEP+™ team, is committed to total project collaboration to meet the challenging needs of today's construction industry.

**CAPABILITIES**

- Construction/Renovation
- Prefabrication
- Domestic Water System Piping/Riser Replacement
- Domestic Water Pumping System
- Sanitary/Storm Water Pumping Systems
- Plumbing System Condition Assessments
- Interior Underground
- High Purity Water Systems
- Service & Maintenance

**VIRTUAL DESIGN & CONSTRUCTION**

- Engineering & Design
- BIM
- 3D Scanning
- Multi-Discipline Collaboration
- Integration/Fabrication
- MEP+™ Logistics
- Primavera Scheduling
- Advance Mobile Technology

**INDUSTRIES SERVED**

- Hospitality
- Education/Institutional
- Mission Critical
- Food Processing
- High-Rise Office & Multi-Family
- Healthcare
- Industrial Manufacturing
- Pharmaceutical
- Industrial Refrigeration
- Stadiums


**MEP+™ SOLUTIONS**

9341 Adam Don Parkway  
Woodridge, IL 60517  
Phone: 630.887.7700

2646 Highway Avenue, Unit 202  
Highland, IN 46322  
Phone: 219.392.3000

3314 Ambrose Avenue  
Nashville, TN 37207  
Phone: 629.895.2900

24 HOUR EMERGENCY 800-794-5033 • [www.amsindustries.com](http://www.amsindustries.com)





Our 24/7 plumbing service team consists of licensed plumbers here to assist all your routine and emergency plumbing needs. All service technicians are equipped with well stocked vehicles and tooling to meet your most challenging plumbing service requirements.

We offer annual maintenance programs that are customized to your facilities specific needs. These include scheduled rodding services, grease/oil interceptor cleaning, domestic water heating plant maintenance, booster system maintenance, PRV maintenance, and RPZ annual certification.

#### **CAPABILITIES**

- Emergency Service
- Waste/Venting System Repair & Maintenance
- Domestic Water System Piping/Riser Replacement/Repairs
- Domestic Water Pumping System Repair & Maintenance
- Sanitary/Storm Water Pumping Systems
- Domestic Water Heating Repair & Maintenance
- RPZ Testing & Certification
- PRV Repair & Maintenance
- Sewer/Grease Trap Maintenance
- Plumbing System Condition Assessments
- Mobile Jetter & Drain Service



#### **INDUSTRIES SERVED**

- Hospitality
- Educational/Institutional
- Mission Critical
- Food Processing
- High-Rise Office & Multi-Family
- Healthcare
- Industrial Manufacturing
- Pharmaceutical

#### **Energy Efficiency Measures Installer**

ICC # 18-0265

## **MEP+<sup>TM</sup> SOLUTIONS**

9341 Adam Don Parkway  
Woodridge, IL 60517  
Phone: 630.887.7700

2646 Highway Avenue, Unit 202  
Highland, IN 46322  
Phone: 219.392.3000

3314 Ambrose Avenue  
Nashville, TN 37207  
Phone: 629.895.2900

24 HOUR EMERGENCY 800-794-5033 • [www.amsindustries.com](http://www.amsindustries.com)





**INDUSTRIAL REFRIGERATION**


AMS Industries, Inc. was founded as an industrial refrigeration contractor in 1963. The Industrial Refrigeration Group has developed into a full-service MEP+™ contractor providing total plant development, complete engineering and design, installation, system control, commissioning, and training.

This specialized group offers a team of talented mechanical engineers, CAD designers, project managers and field supervision for complete Integrated Project Delivery (IPD) focusing on cost-effective solutions, strategic planning for facility expansion, process/operational interface, energy management and equipment maintenance.

**CAPABILITIES**

- Ammonia Refrigeration Systems
- Freon Systems
- CO2 Transcritical Systems
- Ammonia/CO2 Cascade Systems
- Process HVAC
- Complete Plant Engineering & Design
- Control Design & Installation
- Plant Energy/Efficiency Analysis
- Commissioning & Training
- 24/7 Emergency Service
- Preventative Maintenance
- State of the Art Prefabrication Facility

**VIRTUAL DESIGN & CONSTRUCTION**

- Engineering & Design
- BIM
- 3D Scanning
- Multi-Discipline Collaboration
- Integration/Fabrication
- MEP+™ Logistics
- Primavera Scheduling
- Advance Mobile Technology

**INDUSTRIES SERVED**

- Cold Storage
- Meat & Poultry Processing
- Beverage & Bottling
- Dairy/Ice Cream
- Bakery
- Edible Oil Refining
- Confectionery
- Industrial Manufacturing
- Pharmaceuticals

**MEP+™ SOLUTIONS**

9341 Adam Don Parkway  
Woodridge, IL 60517  
Phone: 630.887.7700

2646 Highway Avenue, Unit 202  
Highland, IN 46322  
Phone: 219.392.3000

3314 Ambrose Avenue  
Nashville, TN 37207  
Phone: 629.895.2900

24 HOUR EMERGENCY 800-794-5033 • [www.amsindustries.com](http://www.amsindustries.com)





In collaboration with our Industrial Refrigeration Design and Construction team, AMS Industries, Inc. offers complete Integrated Project Delivery (IPD) for the design and installation of all food process and utility systems for the food manufacturing industry. Our team approach promotes collaboration with all stakeholders to create a proficient project delivery structure.

AMS' extensive experience in the food process industry has allowed us to develop unmatched expertise and knowledge for the food processing industries inclusive of design, strategic planning, construction, operational proficiency and maintenance for the life of your building.



#### **PROCESS SYSTEMS**

- High-Pressure Hot Water Systems
- Steam
- Compressed Air
- Natural Gas
- Sanitation Systems
- CO2/Nitrogen
- Process HVAC
- Custom Metal Fabrication
- Hydraulics
- CIP/COP
- Waste Water Treatment

#### **VIRTUAL DESIGN & CONSTRUCTION**

- Engineering & Design
- BIM
- 3D Scanning
- Multi-Discipline Collaboration
- Integration/Fabrication
- MEP+™ Logistics
- Primavera Scheduling
- Advance Mobile Technology

#### **INDUSTRIES SERVED**

- Cold Storage
- Meat & Poultry Processing
- Beverage & Bottling
- Dairy/Ice Cream
- Bakery
- Edible Oil Refining
- Confectionery
- Pharmaceuticals

## **MEP+™ SOLUTIONS**

9341 Adam Don Parkway  
Woodridge, IL 60517  
Phone: 630.887.7700

2646 Highway Avenue, Unit 202  
Highland, IN 46322  
Phone: 219.392.3000

3314 Ambrose Avenue  
Nashville, TN 37207  
Phone: 629.895.2900

24 HOUR EMERGENCY 800-794-5033 • [www.amsindustries.com](http://www.amsindustries.com)



The Fire Protection Group at AMS Industries, Inc. prides itself on providing our customers with a total service experience from design/coordination, installation, testing, and maintenance. Our 24-hour service line and dedicated dispatch will connect you with any of the many industries served by AMS.

The install and service groups have decades of combined Fire Protection experience in the following areas:

- Wet Systems
- Dry Systems, including trip testing
- Pre-Action Systems
- Antifreeze Tests
- Deluge Systems
- Clean Agent Systems
- Fire Pumps
- Annual and quarterly NFPA inspections
- 5-year internal inspections

### **FIRE SPRINKLER SYSTEM INSPECTIONS**

Periodic inspections are required and vital over the lifetime of a system. Even if AMS Industries, Inc. didn't perform the install, we can ensure your system is up to code.

### **FIRE SPRINKLER SYSTEM TESTING**

Our experienced team can perform testing on backflow preventers, fire pumps, and all components on your fire sprinkler system.

### **INSTALLATION & MAINTENANCE**

A properly designed and installed fire protection system is essential to ensure operation in case of an emergency.

### **FIELD CREW**

All of our fitters are members of Sprinkler Fitters Local 281 and have extensive safety training. Our trucks and fitters are tooled to handle all types of projects and can be dispatched remotely.



### **FIRE SPRINKLER RETROFITS**

It may be necessary for your existing building to now require a fire sprinkler system. AMS Industries, Inc. Fire Protection Group will walk you through anything from occupancy to code changes, remodel, or insurance requirements, step by step, with minimal business interruption.

### **SERVICES PROVIDED**

- Inspections
- Testing
- Maintenance
- Repair
- Design/BIM Coordination
- Hydraulic Analysis
- Hydrant Flow Testing
- Installation
- Commissioning

### **INDUSTRIES SERVED**

- New Construction
- Renovation
- Tenant Improvement
- Retrofit
- High-Rise
- Hospitality
- Education/Institutional
- Governmental
- Healthcare
- Industrial & Manufacturing
- Data Centers
- Design/Build
- Plan & Spec

### **Affiliations**

Sprinkler Fitters Local 281  
NFPA  
NFSA  
SFFPE  
NICET

### **Service Areas**

Illinois  
Indiana

## **MEP+<sup>TM</sup> SOLUTIONS**

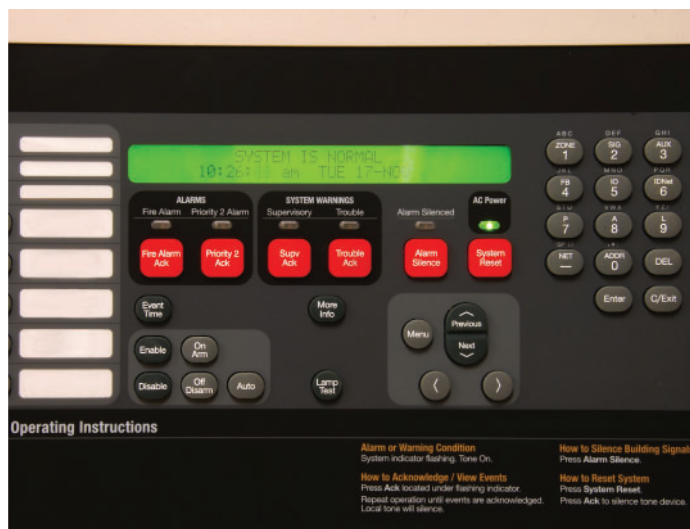
9341 Adam Don Parkway  
Woodridge, IL 60517  
Phone: 630.887.7700

2646 Highway Avenue, Unit 202  
Highland, IN 46322  
Phone: 219.392.3000

3314 Ambrose Avenue  
Nashville, TN 37207  
Phone: 629.895.2900

24 HOUR EMERGENCY 800-794-5033 • [www.amsindustries.com](http://www.amsindustries.com)





As part of our MEP+™ suite of services AMS Industries, Inc. Fire Alarm Services Group has the expertise and resources to assist with the most complex systems and can “bridge the gap” between disciplines to truly provide comprehensive turnkey solutions.

Our decades of combined experience coupled with our commitment to quality and our 24/7 service offerings help to ensure a safe environment for occupants and provides peace of mind that these critical systems will perform properly when needed.

Private Alarm Contractor Agency License #127.001791  
PERC® & TWIC® Certified Technicians



### INDUSTRIES SERVED

- Hospitality
- Education/Institutional
- Governmental
- Mission Critical
- High-Rise Office & Multi-Family
- Healthcare
- Food Processing
- Manufacturing
- Pharmaceutical

### SERVICES PROVIDED

- UL Certified Fire Alarm Monitoring
- NFPA-72 Testing & Inspection
- Troubleshooting & Repair
- Consulting
- Upgrades & Retrofits
- Toxic Gas Detection System Testing & Inspection
- Smoke Control Systems Maintenance & Repair
- Local Code Required Smoke Control System Testing & Certification

### SYSTEMS

- Fire Alarm Systems (All Manufacturers)
- Monitoring Systems
- Voice Evacuation & Public Address Systems
- Area of Rescue Communication Systems
- Smoke Control Systems
- Clean Agent Systems
- Toxic Gas Detection Systems

## MEP+™ SOLUTIONS

9341 Adam Don Parkway  
Woodridge, IL 60517  
Phone: 630.887.7700

2646 Highway Avenue, Unit 202  
Highland, IN 46322  
Phone: 219.392.3000

3314 Ambrose Avenue  
Nashville, TN 37207  
Phone: 629.895.2900

24 HOUR EMERGENCY 800-794-5033 • [www.amsindustries.com](http://www.amsindustries.com)







The rapidly changing demands for present-day businesses require hypersensitive environments to host computer networking, data processing, data storage, and telecom equipment. To keep pace with the increased demand for data storage and processing AMS launched our Mission Critical Construction Group to address the fastest, and in many cases, the most demanding growth markets in our country.

Our Mission Critical Construction Group was founded on our proven client-centric philosophy as we have developed in the Industrial Food Manufacturing, Refining, Nuclear, and Power Generation industries. We combined our unique method of planning, project execution, design assistance, collaboration, and commissioning to meet the demanding market requirements.

By capitalizing on our VDC/BIM, Engineering expertise, and specialized leadership in critical facilities around the country we provide the highest quality of work and ensure your project success. Our state of the art 100,000 sqft prefabrication facility allows us to deliver your project with efficiency while maintaining a safe working environment.

### **CAPABILITIES**

- Design/Build & Design/Assist
- Commissioning
- Fabrication-Chilled Water Projects-50% to 60% of the piping labor is performed in the fabrication shop
- Service & Maintenance
- Refrigeration CRAC Installation-Liebert DSE Installation
- Chilled Water Systems-Air & Water Cooled Systems
- Project Size-Single CRAC to 20 MW Chilled Water Systems
- Fuel Systems-Single Generator Belly Tank to Underground Storage Tanks supplying day tanks at each generator
- Fuel Polisher Systems
- HVAC & Plumbing

### **VDC/BIM**

- Collaboration
- Prefabrication
- 3D Scanning
- Coordination
- Operational Data & Maintenance
- Managing the VDC/BIM model for the team
- Advance Mobile Technology

### **MISSION CRITICAL EXPERIENCE**

- |               |                      |
|---------------|----------------------|
| • CenturyLink | • Stream             |
| • CyrusOne    | • McMaster-Carr      |
| • T5          | • Digital Crossroads |

## **MEP+<sup>TM</sup> SOLUTIONS**

9341 Adam Don Parkway  
Woodridge, IL 60517  
Phone: 630.887.7700

2646 Highway Avenue, Unit 202  
Highland, IN 46322  
Phone: 219.392.3000

3314 Ambrose Avenue  
Nashville, TN 37207  
Phone: 629.895.2900

24 HOUR EMERGENCY 800-794-5033 • [www.amsindustries.com](http://www.amsindustries.com)





AMS Industries, Inc. Electrical Group offers complete design, construction, and service for all your power and control electrical needs. As an MEP+™ contractor our team understands the relationship between mechanical and electrical systems and are able to provide seamless system design and installation for a completely coordinated project.

Whether it is design/build, plan and spec, or system maintenance, our years of experience combined with our mechanical support creates a single source service for all your MEP+™ requirements.

### **CAPABILITIES**

- Power Control Voice/Data Installation & Replacement
- Medium Voltage
- Electrical Distribution System Maintenance
- VFD Start Up, Installation
- Electrical System Condition Assessments
- Infrared Imaging Inspection Service
- Speciality Testing Services
- Toxic Gas Detection, Certification, & Maintenance

### **INDUSTRIES SERVED**

- Hospitality
- Education/Institutional
- Mission Critical
- Food Processing
- High-Rise Office & Multi-Family
- Healthcare
- Industrial / Manufacturing
- Pharmaceutical
- Industrial Refrigeration



*By Applying Our Years Of Experience  
In Electrical Contracting, AMS Makes  
Sure That The Job Is Done Right.*

**Electric Vehicle Charging Station Installer**  
ICC # 22-0349

**Energy Efficiency Measures Installer**  
ICC # 18-0265

**Distributed Generation**  
ICC # 23-0206

## **MEP+™ SOLUTIONS**

9341 Adam Don Parkway  
Woodridge, IL 60517  
Phone: 630.887.7700

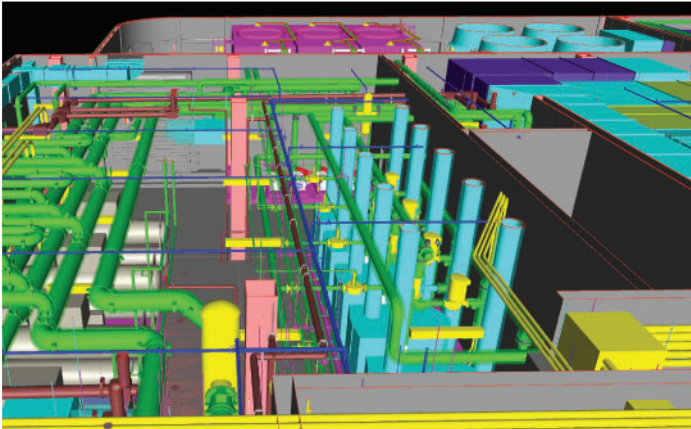
2646 Highway Avenue, Unit 202  
Highland, IN 46322  
Phone: 219.392.3000

3314 Ambrose Avenue  
Nashville, TN 37207  
Phone: 629.895.2900

24 HOUR EMERGENCY 800-794-5033 • [www.amsindustries.com](http://www.amsindustries.com)







In spring of 2017, AMS completed and moved into our new 145,000 sqft headquarters located in Woodridge, IL. The motivation behind this significant move was to leverage all aspects of construction and processing technology while streamlining our workflow process. Our state of the art fabrication facility and office space enables us to implement best practices efficiently and effectively, better serve our industry and our clients, and continually improve upon the means and methods of our construction process.

Our corporate headquarters is comprised of 45,000 sqft Class A office space, allowing for the systematizing of activities with all aspects of our business operations including project management, design, procurement, logistics, and quality assurance. Our 100,000 sqft area of conditioned manufacturing space was designed to accommodate our fabrication needs, including: plumbing, piping, sheet metal, as well as specialty custom and skid fabrication. This combined with our 60,000 sqft of industrial fabrication in East Chicago, Indiana, provides ample facilities and flexibility to meet current and future fabrication demands. Each facility works under the United Association (UA) National Pipe Fabrication Agreement and fully utilizes composite crews bringing significant cost reductions, in addition to providing a safe and congestion free work environment.

Within a dynamic industry that is always advancing, AMS differentiates itself by continually investing in the future while maintaining its commitment to its core values of excellence, integrity, people, and stewardship.

#### **VIRTUAL DESIGN & CONSTRUCTION**

- Engineering & Design
- BIM
- 3D Scanning
- Multi-Discipline Collaboration
- Integration/Fabrication
- MEP+™ Logistics
- Primavera Scheduling
- Spool Drawings
- Advance Mobile Technology

#### **INDUSTRIES SERVED**

- Hospitality
- Education/Institutional
- Mission Critical
- Food Processing
- High-Rise Office & Multi-Family
- Healthcare
- Industrial Manufacturing
- Pharmaceutical
- Industrial Refrigeration

#### **QUALITY ASSURANCE PROGRAMS**

ISO Based Quality Management System (Non-Accredited)  
Client/Project Specific Program Development

#### **ASME Accreditation**

- “A” (Certificate No. 55,678)
- “PP” (Certificate No. 31,755)
- “U” (Certificate No. 32,843)

#### **NBIC Accreditation**

- “R” (Certificate No. 5525)

Note: These stamps are held at the corporate level.

## **MEP+™ SOLUTIONS**

9341 Adam Don Parkway  
Woodridge, IL 60517  
Phone: 630.887.7700

2646 Highway Avenue, Unit 202  
Highland, IN 46322  
Phone: 219.392.3000

3314 Ambrose Avenue  
Nashville, TN 37207  
Phone: 629.895.2900

24 HOUR EMERGENCY 800-794-5033 • [www.amsindustries.com](http://www.amsindustries.com)





### **“The Front Line of AMS”**

#### **CLIENT SERVICES GROUP STRUCTURE**

The Client Services Group consists of a variety of sub groups that work together to deliver a single streamlined solution to our clients.

- HVAC/R Service
- Industrial Refrigeration
- Plumbing Service
- Central Plant Services
- BAS/System Integration
- Electrical
- Specialized Projects
- Fire Protection
- Fire Alarm
- Smoke Control
- Chimney, Flue, & Venting
- Security Systems

In addition to the above internal services, AMS has aligned ourselves with other industry professionals including fire protection, carpentry, decorating, flooring, concrete, etc., so that we can deliver a true turnkey solution to our clients when the need arises.

#### **INDUSTRIES SERVED**

- Industrial
- Hospitality
- High Rise Office & Multifamily Residential
- Educational/Institutional
- Healthcare
- Pharmaceutical
- Food Processing, Cold Storage & Ice Rinks
- Manufacturing
- Heavy Industrial & Process Refrigeration

## **MEP+<sup>TM</sup> SOLUTIONS**

9341 Adam Don Parkway  
Woodridge, IL 60517  
Phone: 630.887.7700

2646 Highway Avenue, Unit 202  
Highland, IN 46322  
Phone: 219.392.3000

3314 Ambrose Avenue  
Nashville, TN 37207  
Phone: 629.895.2900

24 HOUR EMERGENCY 800-794-5033 • [www.amsindustries.com](http://www.amsindustries.com)







Rounding off our Client Services Group, the Specialized Projects team focuses on fast-tracked, scheduled driven projects with the potential to combine services to provide the client with simplified project management. Whether the project requires a single trade or is a full turnkey requiring multiple trade disciplines, our Specialized Project team can deliver the right solution to fit our client's needs.

This team consists of engineers, managers, and MEP+™ field leadership/tradesmen that work together with an alliance other like-minded trusted industry professionals including fire protection, carpentry, decorating, flooring, concrete, etc. so that we can deliver a true turnkey solution to our clients when the need arises.

*“Effectively, change is almost impossible without industry-wide collaboration, cooperation, and consensus.”*

*-Simon Mainwaring*

#### **CAPABILITIES**

- Large & Small Scale MEP+™ System Installation/Retrofit
- Tenant Improvement MEP+™ Construction
- Turnkey Project Services
- Design, Engineering & Collaboration
- Fabrication Services
- Property Condition Assessments
- Utility Rebate Management

#### **INDUSTRIES SERVED**

- Hospitality
- Educational/Institutional
- Mission Critical
- Food Processing
- High-Rise & Multi-Family
- Healthcare
- Industrial Manufacturing
- Pharmaceutical
- Industrial Refrigeration

## **MEP+™ SOLUTIONS**

9341 Adam Don Parkway  
Woodridge, IL 60517  
Phone: 630.887.7700

2646 Highway Avenue, Unit 202  
Highland, IN 46322  
Phone: 219.392.3000

3314 Ambrose Avenue  
Nashville, TN 37207  
Phone: 629.895.2900

24 HOUR EMERGENCY 800-794-5033 • [www.amsindustries.com](http://www.amsindustries.com)





As a further enhancement to our MEP+™ suite of services, AMS Industries, Inc. provides comprehensive Security System Services.

Backed by Chicagoland's premier full service mechanical contractor, our Security Systems Services Group has the expertise and resources to assist you with the most complex of systems. Let us demonstrate the value of having your security system serviced by a team that can "bridge the gap" between disciplines and truly provide comprehensive turnkey solutions.

Private Alarm Contractor Agency License #127.001791

PERC® & TWIC® Certified Technicians



### SYSTEMS

- Intrusion
- Surveillance (CCTV)
- Access Control
- Turnstiles
- Parking Control & Gate Systems
- Rapid Alert Systems

### FACTORY CERTIFIED

- Vicon
- Honeywell WEBs
- DMP
- Northern
- GE
- Bosch
- Keri
- Firetide
- BluePoint Alert Solutions

### SERVICES PROVIDED

- UL Certified Alarm Monitoring
- Troubleshooting & Repair
- Consulting
- Commissioning
- Upgrades & Retrofits
- Maintenance
- Training
- R&M/Capital Planning

## MEP+™ SOLUTIONS

Reports powered by  
Building Reports



9341 Adam Don Parkway  
Woodridge, IL 60517  
Phone: 630.887.7700

2646 Highway Avenue, Unit 202  
Highland, IN 46322  
Phone: 219.392.3000

3314 Ambrose Avenue  
Nashville, TN 37207  
Phone: 629.895.2900

24 HOUR EMERGENCY 800-794-5033 • [www.amsindustries.com](http://www.amsindustries.com)







AMS Industries, Inc. understands it is vitally important to provide clean drinking water and wastewater solutions for Municipalities and Industrial Manufacturers. These priorities are coupled with the need for better solutions for a growing population to help keep our environment sanitary and lessen the environmental impact of our industries and communities for future generations.

AMS is a full-service MEP+™ contractor signatory with all major trade unions and has the added value of providing experienced leadership from all trades putting us in a unique position for in-house multi-trade collaboration and project execution. Leveraging our three decades of heavy industrial experience allows us to capitalize on our field experience, QA/QC, rigging and specialty welding skillset to meet the stringent MEP+™ and general construction requirements of the water treatment industry.

#### **CAPABILITIES**

- Project Management & Subcontract Coordination
- Multi-trade Collaboration
- Strong Relationships with Industry-leading Subcontractors and Equipment Manufacturers
- Schedule Management
- 24/365 Emergency Service
- Process Piping-Rigging
- Prefabrication

#### **TRADE AFFILIATIONS**

- Pipefitters
- Sheet Metal Workers
- Plumbing
- Electrical Power & Control Wiring

#### **INDUSTRIES SERVED**

- Municipalities
- Industrial Manufacturing
- Commercial Food Processing

#### **TYPICAL PROJECTS**

- Wastewater Treatment Facilities
- Lift Stations
- Filtration Systems
- Potable & Wastewater
- Pumping Stations
- Chlorination Systems

#### **QUALITY ASSURANCE PROGRAMS**

ISO Based Quality Management System (Non-Accredited)  
Client/Project Specific Program Development

#### **ASME Accreditation**

"A" (Certificate No. 55,678)  
"PP" (Certificate No. 31,755)  
"U" (Certificate No. 32,843)

#### **NBIC Accreditation**

"R" (Certificate No. 5525)

Note: These stamps are held at the corporate level.

## **MEP+™ SOLUTIONS**

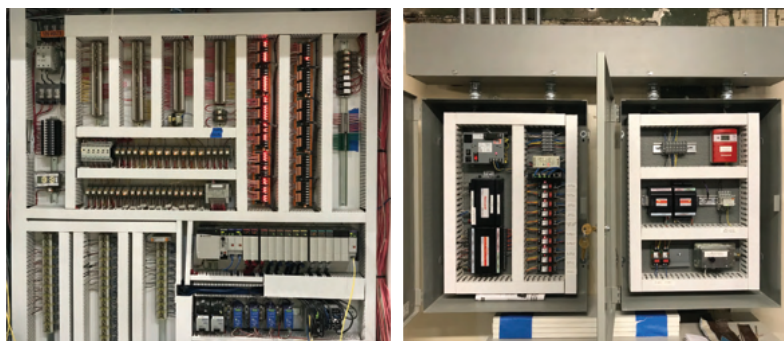
9341 Adam Don Parkway  
Woodridge, IL 60517  
Phone: 630.887.7700

2646 Highway Avenue, Unit 202  
Highland, IN 46322  
Phone: 219.392.3000

3314 Ambrose Avenue  
Nashville, TN 37207  
Phone: 629.895.2900

24 HOUR EMERGENCY 800-794-5033 • [www.amsindustries.com](http://www.amsindustries.com)





### **BAS/SYSTEMS INTEGRATION**

The foundation of our Systems Integration Group is based on delivering projects with fully open architecture that will allow the many systems within a facility to be integrated and interoperable. We begin each design based on this foundation and develop a clear understanding of the needs of our client and the needs of the facility so at project completion you can be assured that every detail has been considered.

### **SMART/EFFICIENT FACILITIES**

AMS Industries, Inc., offers smart building technology and practices that are becoming a requirement for well-run, energy efficient facilities. AMS professionals can conduct an energy audit, install or upgrade an energy efficient system or integrate entire building systems to one platform while maximizing efficiency and providing more granular control, thus saving time and money.

#### **The AMS Energy Team will help you:**

- Conduct an energy audit
- Plan and install custom energy efficient system
- Track energy consumption
- Identify rebates and tax incentives
- Improve your Energy Star rating
- Acquire sustainable benchmarking (LEED certification)

### **CAPABILITIES**

- Installation & Replacement
- BAS/Pneumatic System Repair & Maintenance
- Enterprise Management
- Energy Management/Energy Studies
- Lighting Control, Access Control & Surveillance
- Design/Build Services

### **INDUSTRIES SERVED**

- Hospitality
- Education/Institutional
- Mission Critical
- Food Processing
- High-Rise Office & Multi-Family
- Healthcare
- Industrial Manufacturing
- Pharmaceutical
- Industrial Refrigeration

### **THE NIAGARA FRAMEWORK**

When AMS Industries, Inc. installs open systems built on the Niagara Framework, our clients not only realize better and more efficient control of their facilities, they are now in control of who they choose to partner with for long-term service. Each of our projects are designed so the client is no longer limited to one proprietary source for service, systems upgrades, and maintenance.

By installing systems built on the Niagara Framework there is no limit to the systems a client can choose to integrate.

- Access Control
- Irrigation
- Mission Critical Conditioning
- Lighting Control
- Utility Metering
- Surveillance
- Continuous Commissioning
- HVAC Controls
- Guest Room Controls
- Gas Detection
- Emergency Power Systems
- Fire Protection
- Central Plant Systems
- Geothermal
- BTU Meeting

### **SUPPORT**

AMS doesn't stop after implementation. Our professionals will monitor and maintain these complex and dynamic systems at an optimal performance to ensure you receive the maximum benefit from your investment.

## **MEP+<sup>TM</sup> SOLUTIONS**

9341 Adam Don Parkway  
Woodridge, IL 60517  
Phone: 630.887.7700

2646 Highway Avenue, Unit 202  
Highland, IN 46322  
Phone: 219.392.3000

3314 Ambrose Avenue  
Nashville, TN 37207  
Phone: 629.895.2900

24 HOUR EMERGENCY 800-794-5033 • [www.amsindustries.com](http://www.amsindustries.com)





**CENTRAL PLANT SERVICES**


As an integral component of our Client Services Group, the Central Plant Services team focuses on providing solutions to your heating and cooling plant needs. The team consists of professional engineers, estimators, system integration experts and project managers to assist in central plant upgrades, expansions or complete equipment replacement. Coupled with its VDC/BIM capabilities and prefabrication services we are in a position to minimize system downtime and optimize project execution.

**CAPABILITIES**

- Central Heating/Cooling Plant Replacement & Upgrades
- Chiller Overhaul
- Burner Upgrades & Burner Tuning
- Boilermaker Services & Washouts
- Chimney/Flue Inspection, Replacement, Maintenance & Repair
- Steam Trap Analysis & Repair
- Central Plant Condition Assessments

**INDUSTRIES SERVED**

- Hospitality
- Education/Institutional
- Mission Critical
- Food Processing
- High-Rise Office & Multi-Family
- Healthcare
- Industrial Manufacturing
- Pharmaceutical
- Industrial Refrigeration


**MEP+<sup>TM</sup> SOLUTIONS**

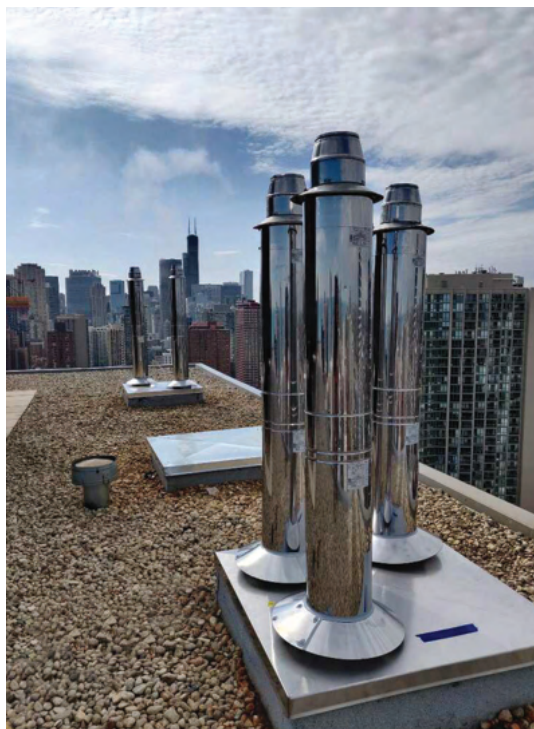
9341 Adam Don Parkway  
Woodridge, IL 60517  
Phone: 630.887.7700

2646 Highway Avenue, Unit 202  
Highland, IN 46322  
Phone: 219.392.3000

3314 Ambrose Avenue  
Nashville, TN 37207  
Phone: 629.895.2900

24 HOUR EMERGENCY 800-794-5033 • [www.amsindustries.com](http://www.amsindustries.com)





With decades of combined experience the AMS Chimney Flue & Vent Group are the industry experts for all of your simple to complex venting system needs.

Our strategic factory relationships allow us to provide the right materials at a highly competitive price to complete your project on time and on budget.

From custom outlet adapters to custom chimney liners, our state of the art fabrication facility has the solutions for the most complex projects.

*Chicago's Most Experienced Chimney Team is here to service all of your venting needs.*

#### **SERVICES**

- Assessments
- Troubleshooting
- R&M/Capital Planning
- Consulting
- Design
- Custom Fabrication
- Repairs/Retrofit/Installation
- Direct Product Sales

#### **APPLICATIONS**

- Heating Plants
- Laundries
- Generator Exhaust
- Grease Duct
- Chimney Liners
- Free-Standing Stacks
- Combustion Air Systems

#### **TURN-KEY SOLUTIONS**

- Induced Draft Systems
- Draft Controls
- Complex System Control
- Power

#### **INDUSTRIES SERVED**

- Hospitality
- Education/Institutional
- Mission Critical
- Food Processing
- High-Rise Office & Multi-Family
- Healthcare
- Manufacturing
- Pharmaceutical
- Heavy Industrial

## **MEP+<sup>TM</sup> SOLUTIONS**

9341 Adam Don Parkway  
Woodridge, IL 60517  
Phone: 630.887.7700

2646 Highway Avenue, Unit 202  
Highland, IN 46322  
Phone: 219.392.3000

3314 Ambrose Avenue  
Nashville, TN 37207  
Phone: 629.895.2900

24 HOUR EMERGENCY 800-794-5033 • [www.amsindustries.com](http://www.amsindustries.com)







The success of every project begins with a full understanding of the client's needs and intended goals. AMS offers a complete engineering and system design team to work in collaboration with owners, developers, and construction management teams. Our clients are able to capitalize on our years of experience to provide cost-effective solutions while keeping the focus on operations, serviceability, and energy efficiency. This process leverages our technology and collaborative efforts to allow AMS to utilize our prefabrication capabilities, thus improving quality, shortening project durations, lower installation costs, and reduce safety risks.

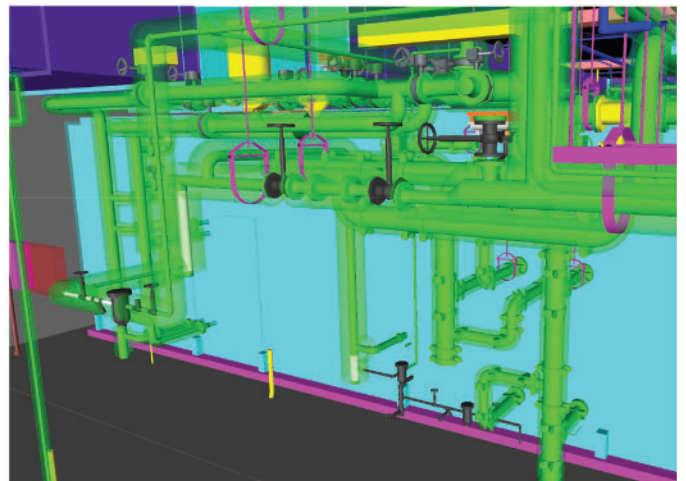
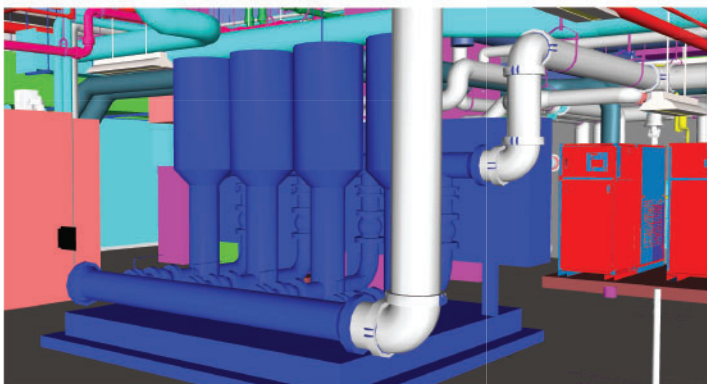
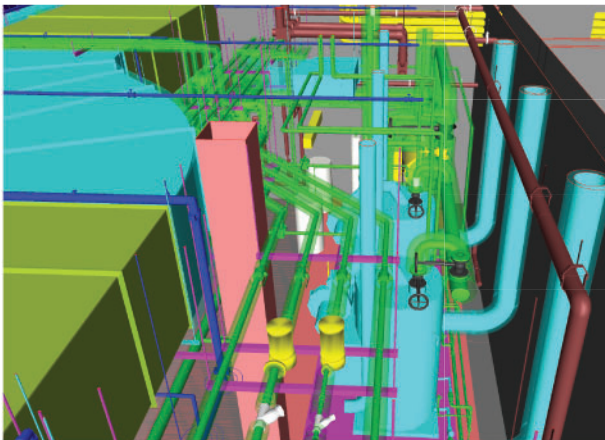
**AMS Industries, Inc. is a  
Licensed Professional Engineering Corporation.**

#### **CAPABILITIES**

- Engineering & Design
- Energy Audit/Analysis
- Integrated Project Delivery (IPD)
- Prefabrication Drawings
- 3D Scanning
- VDC/BIM
- Multi-Disciplined Collaboration
- Primavera Scheduling

#### **INDUSTRIES SERVED**

- Hospitality
- Education/Institutional
- Mission Critical
- Food Processing
- High-Rise Office & Multi-Family
- Healthcare
- Industrial Manufacturing
- Pharmaceutical
- Industrial Refrigeration



## **MEP+<sup>TM</sup> SOLUTIONS**

9341 Adam Don Parkway  
Woodridge, IL 60517  
Phone: 630.887.7700

2646 Highway Avenue, Unit 202  
Highland, IN 46322  
Phone: 219.392.3000

3314 Ambrose Avenue  
Nashville, TN 37207  
Phone: 629.895.2900

24 HOUR EMERGENCY 800-794-5033 • [www.amsindustries.com](http://www.amsindustries.com)





## Our Philosophy

At AMS, we believe that quality leadership and the right people coupled with integrity and a passion for excellence create a company-wide philosophy for mutual success. We have set a high level of expectation for ourselves and for the integrity of those we serve, and we vow never to compromise those standards.

## Our Mission

A team of individuals working together, who are passionately committed to providing the best customer experience with open communication, innovative and proven solutions with reliable safety and quality customer service. Equally, we strive to develop, buildup and impact our teammates, clients and those in our community.

## Our History

It was in 1963 that John Berzanskis Sr. would start AMS out of a former gas station facility with the idea in mind to be a refrigeration company that simply "cares". Over fifty years later, we are now 500+ employees to date and are endlessly expanding our focus in the mechanical industry with our reliable, hard, and honest work to better serve our clients as we proudly continue to stand on that foundation as an employee-owned company.

## Our Core Values



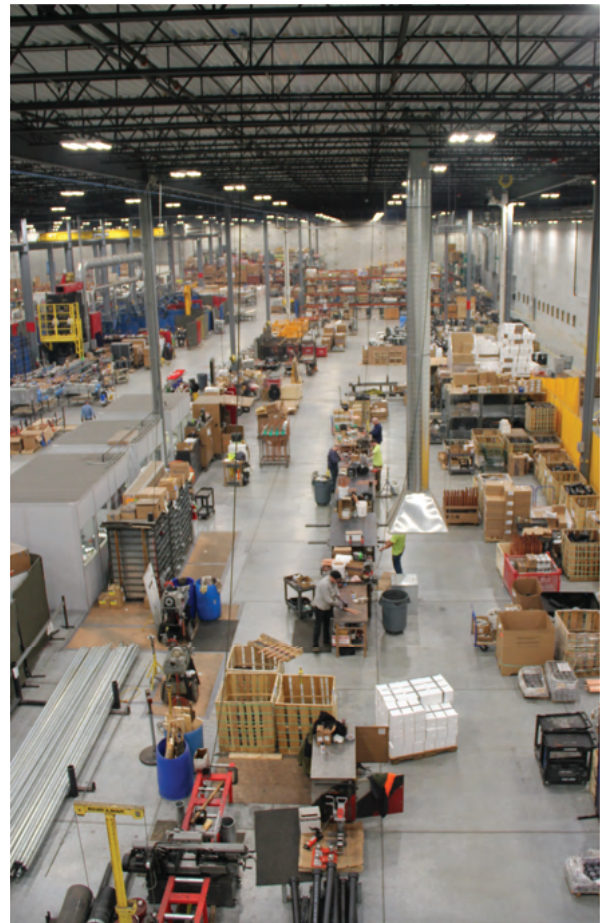
**Safety**, making Zero Accidents a reality...  
Home safe everyday

**Excellence** is in everything we do

**Integrity** is our cornerstone

**People**, building a legacy & developing  
the leadership for tomorrow

**Stewardship**, being accountable for all  
that we do with all that we are given.



# MEP+<sup>TM</sup> SOLUTIONS

***"The achievements of an organization are  
the results of the combined effort of each  
individual."***

**- Vince Lombardi**





# Safety First

At AMS Industries, we believe safety comes first, and we make safety the responsibility of every employee. Through continuous education and training, all AMS employees take responsibility for their individual safety and the safety of their coworkers. Project Management, Shop, and field personnel along with all AMS Leadership are actively involved as a team to prevent accidents and demonstrate safety excellence through intervention and personal example.

Our CORE Values – Safety, Excellence, Integrity, People, and Stewardship – motivate our movements and confirm that safety is core to how we operate. Our Zero Accident Statement is more than words, it guides the conduct of employees and contractors working on our job sites. AMS is committed to the philosophy and practice of achieving and sustaining an accident-free work environment



## AMS Safety...An Attitude...Not An Option!

### Quality Assurance Program

AMS Industries, Inc. is proud to provide our customers with the highest quality standards available throughout every aspect of its operations. This level of quality is maintained through the implementation of our "Quality Assurance Program".

Our program is unsurpassed in assuring our clients that our products and services are provided in strict compliance with industry and customer standards. AMS provides a complete corporate commitment to quality throughout the design, engineering, procurement, fabrication, and inspection process of each and every project. Our Quality Assurance Program includes Certified Inspectors as well as the employment of a full-time Quality Assurance Manager who reports directly to the President.

Both, the American Society of Mechanical Engineers (ASME), and the National Board of Boiler and Pressure Vessel Inspectors (NBBI) have accredited the AMS Quality Assurance Program. As a result, AMS possesses the following Certificates of Authorization:

ASME "A" (Certificate No. 55,678) – Assembly of Power Boilers

ASME "PP" (Certificate No. 31,755) – Fabrication and Assembly of Pressure Piping

ASME "U" (Certificate No. 32,843) – Manufacture of Pressure Vessels

NBBI "R" (Certificate No. 5525) – Metallic Repairs and Alteration

Note: These stamps are held at the corporate level.

## Excellence Is In Everything We Do

### Highlights

- Development, distribution and implementation of safety procedures
- Continuing education and training for AMS field personnel and project managers
- Site-specific safety plans
- Safety incentive programs
- Measured accountability for safety at all levels of the organization
- Implementation of Tool Box Talks
- Extensive hazard identification and correction process
- Pre-job and pre-task safety analysis
- Jobsite safety audits
- Workman's compensation and G/L claims management
- Near accident programs
- Accident and incident investigation programs
- Corrective actions and lessons learned programs
- New hire training and orientation
- Driving safety programs
- Drug and alcohol testing

### Award-Winning Safety Program

At AMS "Zero Accident" is more than just a statement. It is a reality.

### Recent Awards & Recognitions

- Three Rivers Manufacturers Association
- Contractor Score
- Construction Safety Award

**Safety, Making  
Zero Accidents A Reality.  
Home Safe Everyday**



**Living Our Values: Safety, Excellence,  
Integrity, People, and Stewardship**

At AMS, we believe that quality leadership and the right people coupled with integrity and a passion for excellence create a company-wide philosophy for mutual success. We have set a high level of expectation for ourselves and for the integrity of those we serve, and we vow never to compromise those standards.

9341 Adam Don Parkway · Woodridge, IL 60517  
Phone: 630.887.7700

2646 Highway Avenue, Unit 202 · Highland, IN 46322  
Phone: 219.392.3000

3314 Ambrose Avenue · Nashville, TN 37207  
Phone: 629.895.2900

24 HOUR EMERGENCY: 800.794.5033  
[www.amsindustries.com](http://www.amsindustries.com)